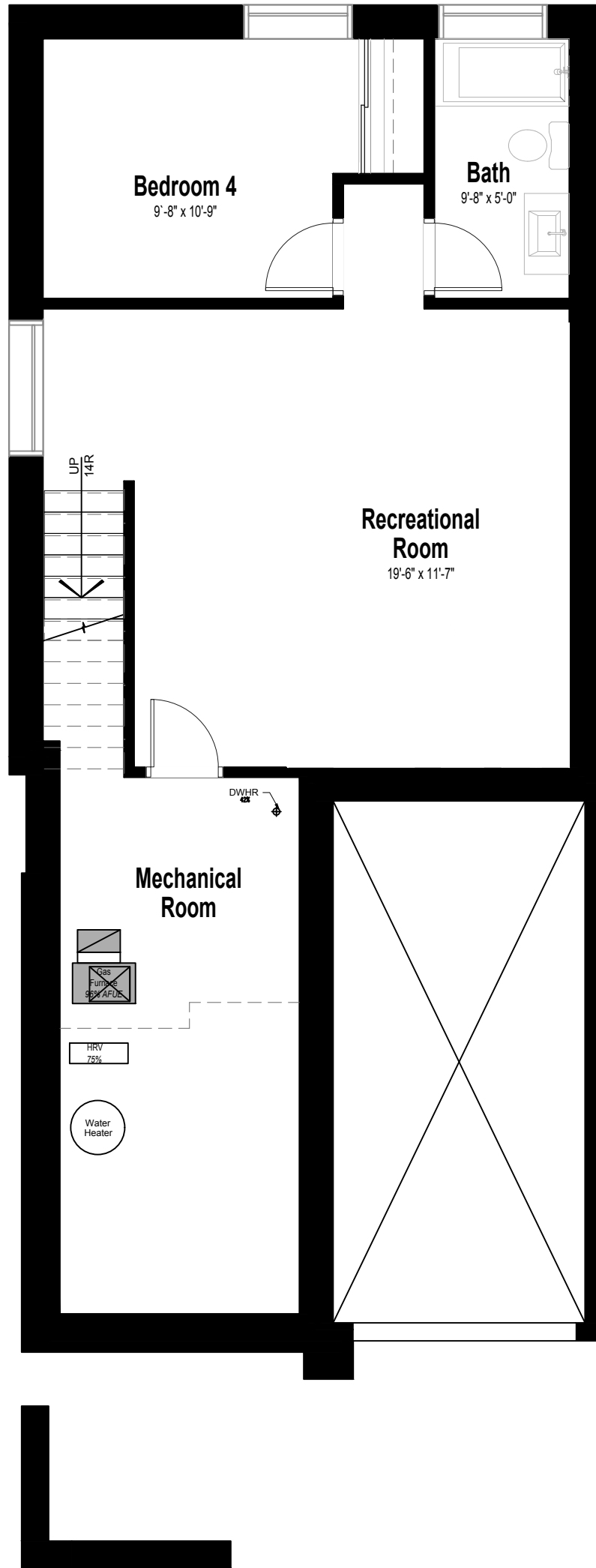


Basement Floor Plan

Finished Area = 604 sq.ft
Unfinished Area = 196 sq.ft

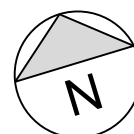
Disclaimer: All room sizes are approximate and are subject to change without notice. Actual square footage and may vary from that states hereon.



BASEMENT PLAN

1

27 sims Ave
Single Detached Dwelling

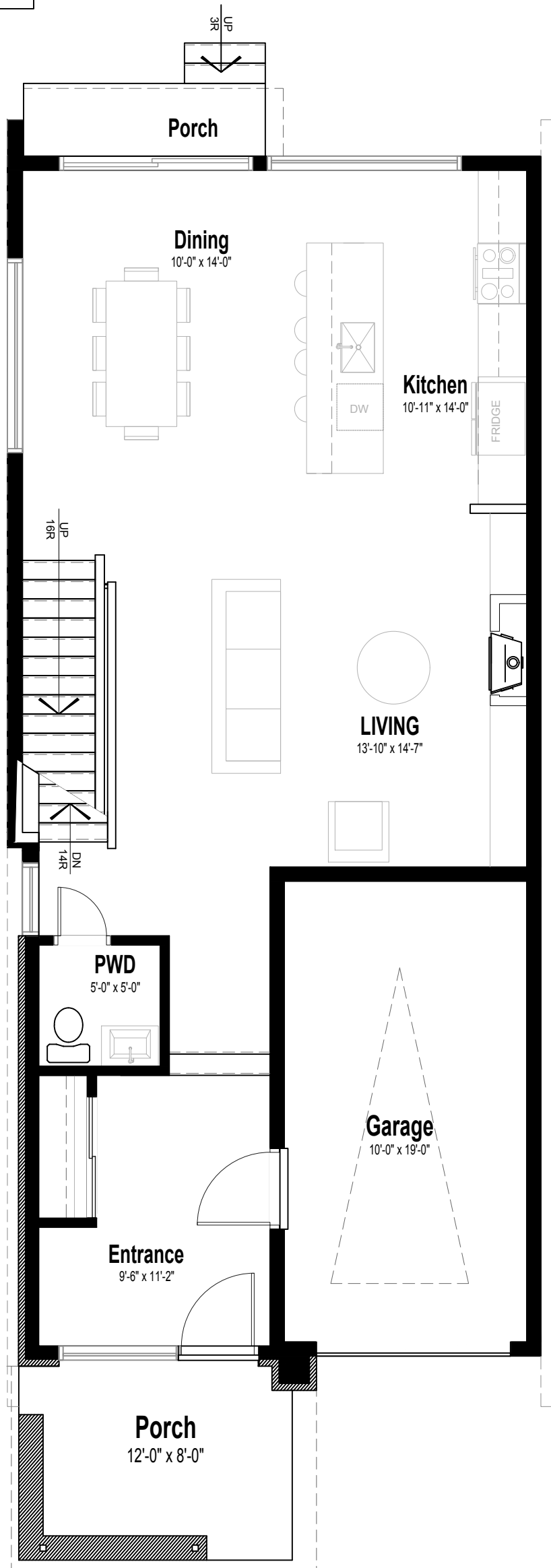


built

Ground Floor Plan

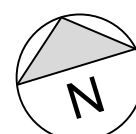
Finished Area = 901 sq.ft
Garage Area = 203 sq.ft

Disclaimer: All room sizes are approximate and are subject to change without notice. Actual square footage and may vary from that states hereon.



1 **GROUND FLOOR PLAN**

27 Sims Ave
Single Detached Dwelling

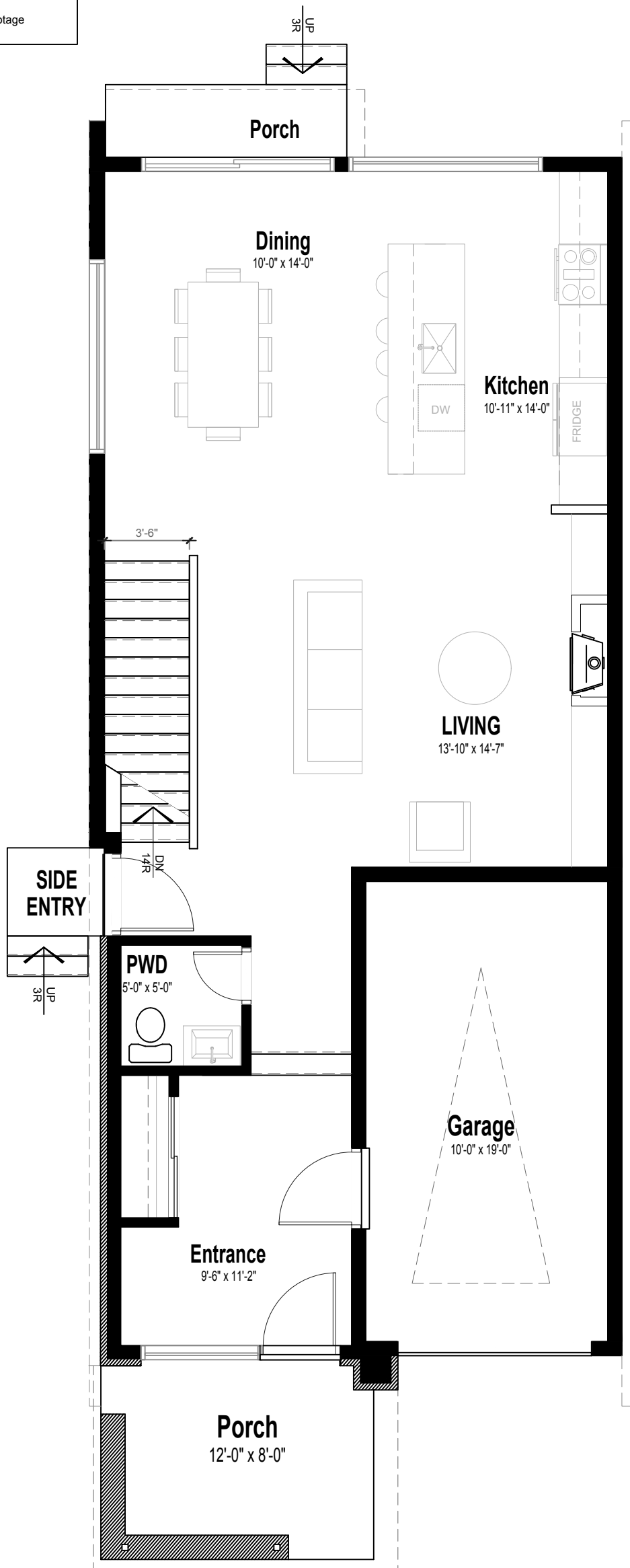


built

Ground Floor Plan

Finished Area = 901 sq.ft
Garage Area = 203 sq.ft

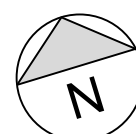
Disclaimer: All room sizes are approximate and are subject to change without notice. Actual square footage and may vary from that states hereon.



GROUND FLOOR PLAN (OPTION 2)

1

27 Sims Ave
Single Detached Dwelling

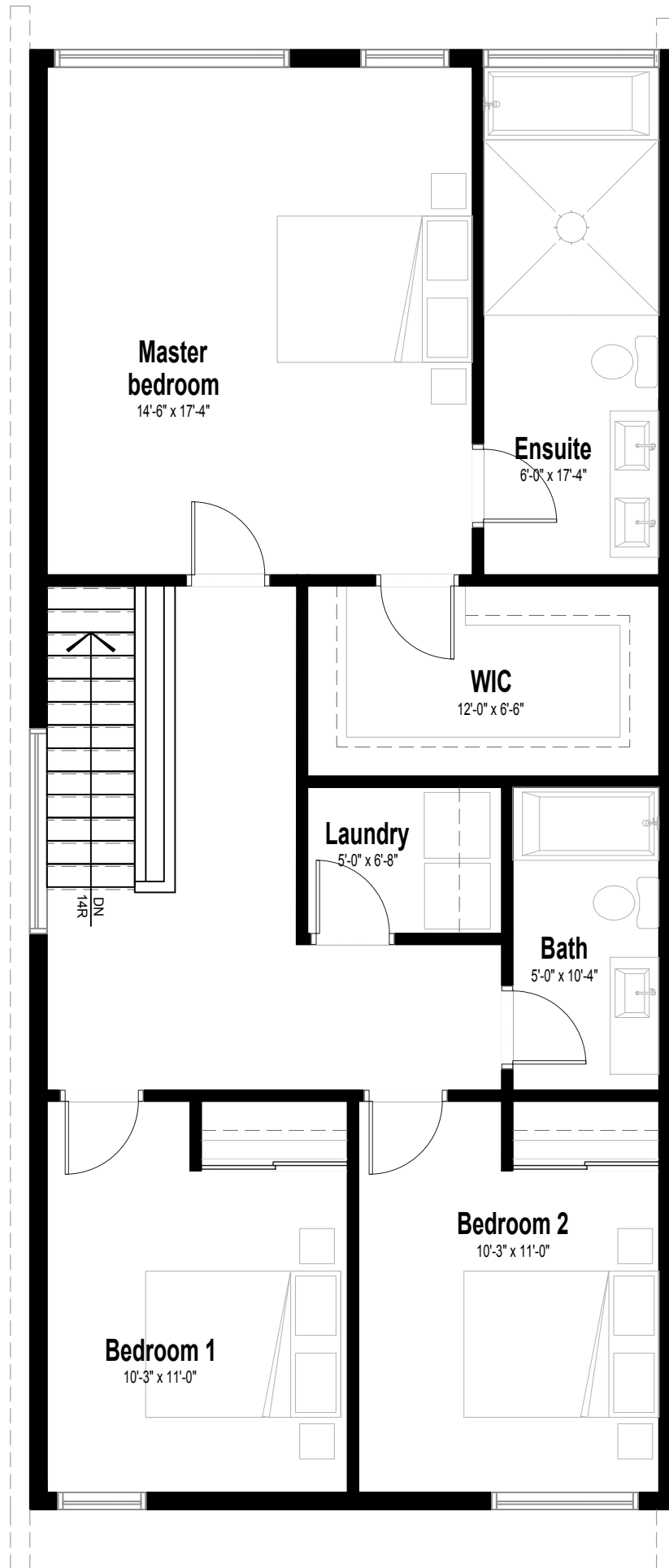


built

Second Floor Plan

Finished Floor = 1102 sq.ft

Disclaimer: All room sizes are approximate and are subject to change without notice. Actual square footage and may vary from that states hereon.



SECOND FLOOR PLAN - Option 1

1

27 Sims Ave
Single Detached Dwelling



built